


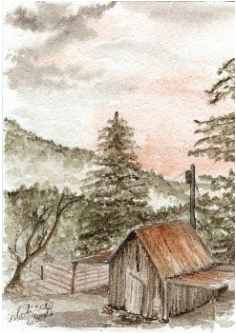







Madison Woods Art Inventory Record

Image	Name	Date created	Price	notes
	Size			
I am willing to take any of these out to show by appointment anywhere in the northwest Arkansas area. madison@wildozark.com				
	"Yellow Sandstone" Twisted Mini 4 x 2"	2/20/20	50.00 framed with rock specimen, not UV protected	yellow sandstone . lightfast Ozark pigments.
	"Sassafras Root Bark" Twisted Mini 4" x 2"	2/20/20	50.00 framed with root bark specimen, not UV protected	extract of sassafras root bark. lightfast Ozark pigments.
	"A Curious Pair" 11 x 14	2/20/20	820.00 budget framed not UV protected \$775 unframed, no mat	red sandstone creek shale, black sandstone (brown pigment), green sandstone, russet sandstone, yellow sandstone . All lightfast Ozark pigments.
	"Old Shed, Pink Sunset" 5 x 7	1/25/20	\$200 framed, not UV protected \$175 unframed, no mat	Bone black, red smoothstone, creek shale, black sandstone (brown pigment), green sandstone, russet sandstone . All lightfast Ozark pigments.




FRAMING

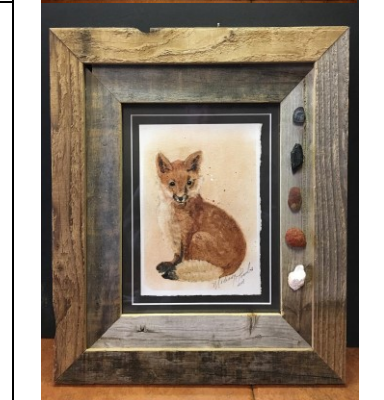
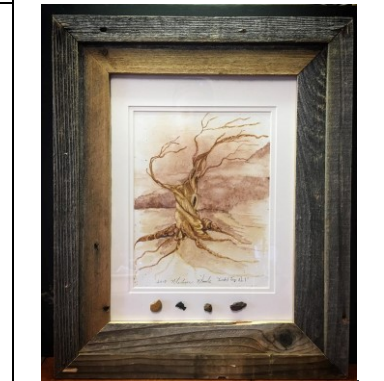
Some of these images do a poor job of showing how these really look. If you'd like to see them in person please request an appointment: madison@wildozark.com



	<p>"Inanna on Fire" 5 x 7</p>	<p>1/23/20</p>	<p>\$200 framed, not UV protected</p> <p>\$175 unframed, no mat</p>	<p>Bone black, red smoothstone, sassafras root bark, black sandstone (brown pigment), yellow sandstone, red sandstone . All lightfast Ozark pigments.</p>
	<p>"Don't Mess With Me" 20 x 16</p>	<p>1/13/20</p>	<p>1950.00, framed with UV protection</p> <p>\$1800 not framed</p>	<p>Shale, bone black, red smoothstone, sassafras leaf, sassafras root bark, black sandstone (brown pigment), yellow sandstone, gray-green sandstone, . All lightfast Ozark pigments.</p>
	<p>"Eye of the Storm" 10.5 x 13</p>	<p>11/30/19</p>	<p>900.00 framed, mounted on acid-free foam-core, museum UV protected varnish</p> <p>\$750 unframed, mounted, varnished</p>	<p>Char-shale, bone black, red sandstone, russet sandstone, black sandstone (brown pigment), yellow sandstone, gray-green sandstone, red leaves of black gum. All lightfast Ozark pigments.</p>
	<p>"Ponca Access in Late Summer" 16 x 12</p>	<p>8/31/19</p>	<p>950.00 framed, UV protected</p> <p>800.00 unframed</p>	<p>Char-shale, red sandstone, russet sandstone, black sandstone (brown pigment), yellow sandstone, bone black, Black gum lake (green). All Ozark pigments. NOT LIGHT FAST-the green is a lake pigment with unknown lifetime. I offer lifetime (mine) offer to touch up color as needed, if needed. Left to itself, the green will slowly change to brown, giving the season a natural autumnal hue.</p>
	<p>"Working the Dark Waters" 16 x 12</p>	<p>8/1/19</p>	<p>1200.00 framed, foam- core mounted, varnished museum grade UV protected with rock specimens</p> <p>960.00 unframed</p>	<p>Char-shale, red sandstone, russet sandstone, black sandstone (brown pigment), yellow sandstone, bone black, gray-green sandstone, Cromwell's Sunrise, Pink Tequila. All Ozark pigments.</p>



	<p>"Ozark Rocks & Leaf" 8 x 10</p>	<p>6/20/19</p>	<p>\$400 framed, mounted on acid-free foam-core varnished with museum grade \$375 unframed, mounted on foamcore /varnished</p>	<p>Char-shale, red sandstone, russet sandstone, black sandstone (brown pigment), yellow sandstone, bone black, gray-green sandstone. All Ozark pigments.</p>
	<p>"Old Man" Twisted Tree No. 1 8x 10</p>	<p>12/3/18</p>	<p>400.00 framed, UV protected, with rock specimens \$375 unframed</p>	<p>A masculine ent tree in purple and yellow sandstone, char-shale.</p>
	<p>Fox No. 1 "Little Rascal" 5 x 7</p>	<p>10/12/18</p>	<p>\$250 UV protected, with rock specimens \$175 unframed</p>	<p>Red sandstone, russet sandstone, wood char, creek shale, ancient limestone. All Ozark pigments.</p>



Make checks payable to:
Wild Ozark
P.O. Box 173
Kingston, AR 72742

Please notify me via email (madison@wildozark.com) if you have decided to purchase one of these so I can remove it from inventory and send you an invoice. I'll take it out of inventory and hold for 10 days awaiting payment. At the end of the 10-day period, if no payment has arrived, I'll return it to the shop inventory. All checks must clear the bank before shipping. To pay by check or credit card, please request an invoice.